



**SEAN & STEPHEN
CORPORATION**

Taipei Office:

4F, NO.3, Lane 335, Sec.4, HSIN-YI Road, Taipei, 106 Taiwan, R.O.C.
TEL:886-2-27011256 FAX:886-2-27021655

Tainan Factory:

No.245, Ta Chiao 2nd Street, Yung-Kang City, Tainan Hsien, 710 Taiwan R.O.C.
TEL:886-6-3037696 FAX:886-6-3037693

China Factory:

Zhongshan Xinxi Optoelectronic Science Tech.Co., LTD
3rd Industry Zone, Tan Zhou Town, Zhong Shan City, Guang Dong Province, China
TEL:86-760-6659181 FAX:86-760-6659191

6594SL – 515L16

Line Direct Green Laser Module (Ø 16mm)



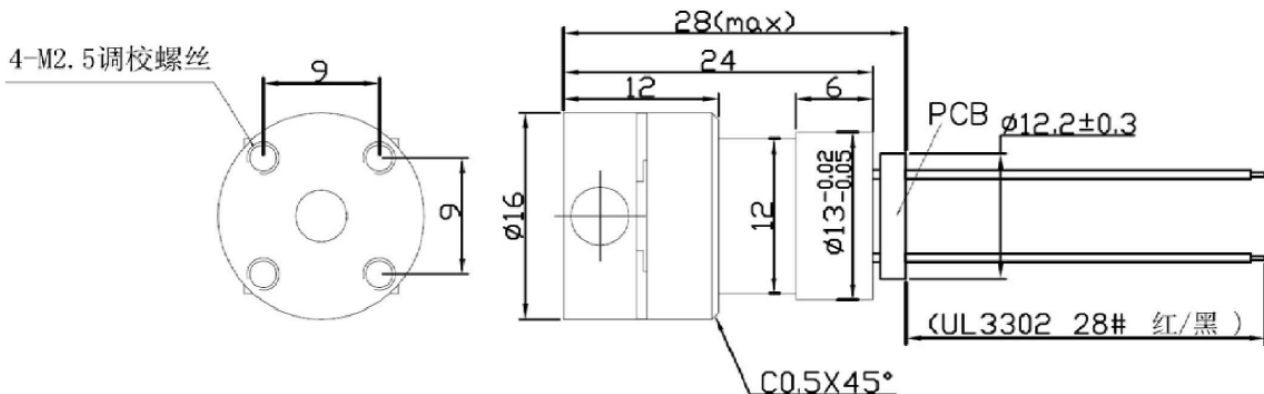
- 4X brighter than red laser.
- Suitable for outdoor use.
- Excellent power stability for long time operator.
- Widely working temperature range.
- Application to Power tools etc...

Specification

Optical Specification

P/N	6594SL-515L16	
PO	CW Optical Power	< 10 mW
λP	Wavelength at Peak Emission	510~520 nm
Vop	Operating Voltage	3.0~7.0V
Lop	Operating Current	< 300mA
TOP	Operating Temp. Range	-10° C ~ +50°C
TSTG	Storage Temp. Range	-20° C ~ +60°C
LASER LINE WIDTH (AT 1M / 5M / 10M)		MAX. 2.8mm / 2.5mm / 4.0mm
LASER LINE LINEARITY (AT 5M)		-1.0~+1.0 mm
LASER LINE DIVERGENCE		>120 degree

Laser Safety:





**SEAN & STEPHEN
CORPORATION**

Taipei Office:

4F, NO.3, Lane 335, Sec.4, HSIN-YI Road, Taipei, 106 Taiwan, R.O.C.
TEL:886-2-27011256 FAX:886-2-27021655

Tainan Factory:

No.245, Ta Chiao 2nd Street, Yung-Kang City, Tainan Hsien, 710 Taiwan R.O.C.
TEL:886-6-3037696 FAX:886-6-3037693

China Factory:

Zhongshan Xinxi Optoelectronic Science Tech.Co., LTD
3rd Industry Zone, Tan Zhou Town, Zhong Shan City, Guang Dong Province, China
TEL:86-760-6659181 FAX:86-760-6659191

6594SL – 515L16

6594SL- 515L16 Typical Electrical/Optical / Characteristics Curves

